



### Features

- Measurement Range: -20 to +60°C and 0 to 100% RH
- LCD Display Shows Temperature, Humidity, Relative Humidity, Date and Time
- Able to store up to 600,000 records with date and time stamps
- Free Software Utility, iOS APP and Android App Included
- Supports the Modbus TCP and MQTT Protocols
- Includes redundant power inputs: PoE (IEEE 802.3af, Class 1) and DC input (DL-101-E Only)
- PhotoMOS Relay Output for Alarm Devices or IAQ Device Control (DL-101-E Only)
- Supports Web Configuration and Firmware Update via Ethernet
- IP 66 Protection Approval
- DIN-Rail or Wall Mounted

### Introduction

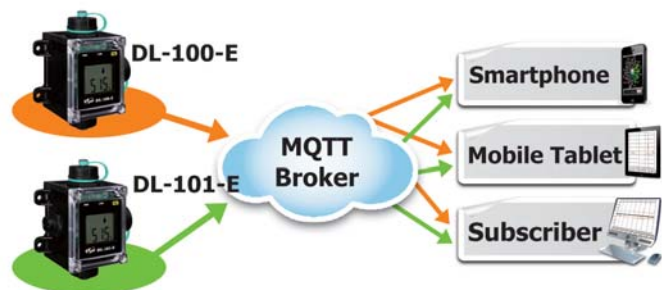
The DL-100-E / DL-101-E series of Data Logger devices can be used to record temperature, humidity and dew point information, including the date and time stamps for each record, with up to 600,000 downloadable records able to be stored. Real-time data can be accessed from the DL-100-E / DL-101-E Data Logger from anywhere and at any time using the free Windows software, the iOS App, or the Android App, as long as it is connected to the same local network as the Data Logger. The DL-100-E / DL-101-E Data Logger supports popular industrial protocols such as Modbus TCP, as well as the emerging machine-to-machine (M2M) / IoT (Internet of Things) connectivity protocol – MQTT. The DL-100-E / DL-101-E Data Logger can be connected using a range of communication interfaces including Ethernet and PoE, meaning that the device can be easily integrated into existing HMI or SCADA systems, ensuring easy maintenance in a distributed control system.

### Multi-platform Remote Access Software

Real-time data from the DL-300 Data Logger can be accessed from anywhere and at any time using the DL300 Utility, the iOS or Android App, or via a regular web browser, as long as it is connected to the same local network as the Data Logger.

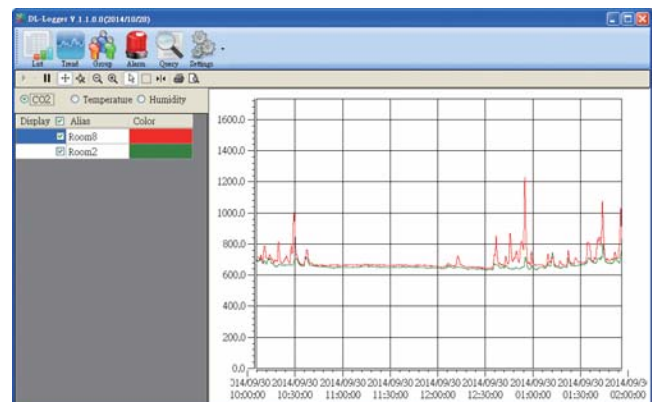


### Supports the MQTT Protocol for IoT Applications



### Free and Powerful DL300 Utility

The DL300 Utility can be used to configure the modules, monitor real-time data, or group DL-300 modules so that the status of distribution groups can be viewed and managed. The utility also allows the log data to be downloaded and exported to a .CSV file that can then be imported into any industry-standard software or spread sheet for analysis.



## Specifications

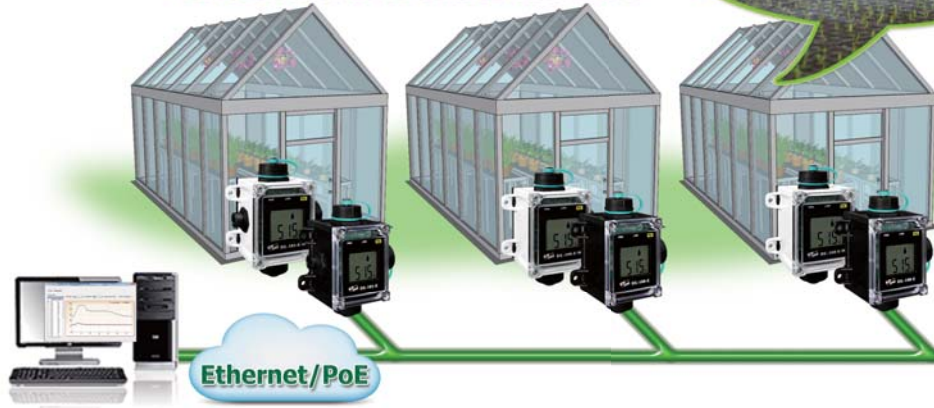
| Model                       | DL-100-E   | DL-100-E-W                   | DL-101-E                | DL-101-E-W |
|-----------------------------|--|------------------------------|-------------------------|------------|
| <b>Temperature Sensor</b>   |  |                              |                         |            |
| Measuring Range             | -20 to +60°C (-31 to +176°F)   |                              |                         |            |
| Resolution                  | 0.1°C  |                              |                         |            |
| Accuracy                    | ±0.4°C   |                              |                         |            |
| Precision                   | ±0.1°C   |                              |                         |            |
| <b>Humidity Sensor</b>      |  |                              |                         |            |
| Measuring Range             | 0 ~ 100% RH  |                              |                         |            |
| Resolution                  | 0.1% RH  |                              |                         |            |
| Accuracy                    | ±3% RH @ 20 to 80% RH  |                              |                         |            |
| Precision                   | ±.1% RH  |                              |                         |            |
| <b>LCD and LED Display</b>  |  |                              |                         |            |
| LCD Information Displayed   | Temperature (°C and °F), Humidity (RH), Relative Humidity, Date and Time |                              |                         |            |
| PWR                         | System indicator (Green)   |                              |                         |            |
| Link                        | Link/Act indicator (Green)   |                              |                         |            |
| PoE                         | PoE indicator (Red)  |                              |                         |            |
| <b>Communication</b>        |  |                              |                         |            |
| Ethernet Port               | 10/100 Base-TX with Auto MDI/MDI-X                                       |                              |                         |            |
| PoE                         | Yes, (IEEE 802.3af, Class 1)   |                              |                         |            |
| Protocol                    | Modbus TCP, MQTT   |                              |                         |            |
| Security                    | Password and IP Filter   |                              |                         |            |
| Dual Watchdog               | Yes, Module, Communication (Programmable)                                |                              |                         |            |
| <b>System</b>               |  |                              |                         |            |
| Real-time Clock             | Yes  |                              |                         |            |
| Data Logger                 | Yes, 600,000 Records   |                              |                         |            |
| PhotoMOS Relay Output       | -  | Form A×2, SPST 100 VDC @ 1 A |                         |            |
| <b>Electrical</b>           |  |                              |                         |            |
| Powered from Terminal Block | -  | +12 to +48 VDC               |                         |            |
| Powered from PoE            | IEEE 802.3af, Class 1 (48 V)   |                              |                         |            |
| Power Consumption           | PoE  | 0.7 W (Max.)                 | 0.7 W (Max.)            |            |
|                             | Non-PoE  | -                            | 0.6 W (Max.)            |            |
| <b>Mechanical</b>           |  |                              |                         |            |
| Dimensions (W x L x H)      | 92 mm x 133 mm x 56 mm   |                              | 100 mm x 133 mm x 56 mm |            |
| Waterproof Level            | IP66   |                              |                         |            |
| Installation                | DIN-Rail; Wall mounted   |                              |                         |            |
| <b>Environment</b>          |  |                              |                         |            |
| Operating Temperature       | -20 to +60°C   |                              |                         |            |
| Storage Temperature         | -30 to +80°C   |                              |                         |            |
| Ambient Relative Humidity   | 5 to 95% RH, Non-condensing  |                              |                         |            |

## Applications

- Transportation of food or pharmaceuticals
- Food and beverage industry (HACCP)
- Blood stations, pharmacies
- Building and energy management
- Museums, archives, galleries
- Warehouses



## Greenhouse Automation



## Installation

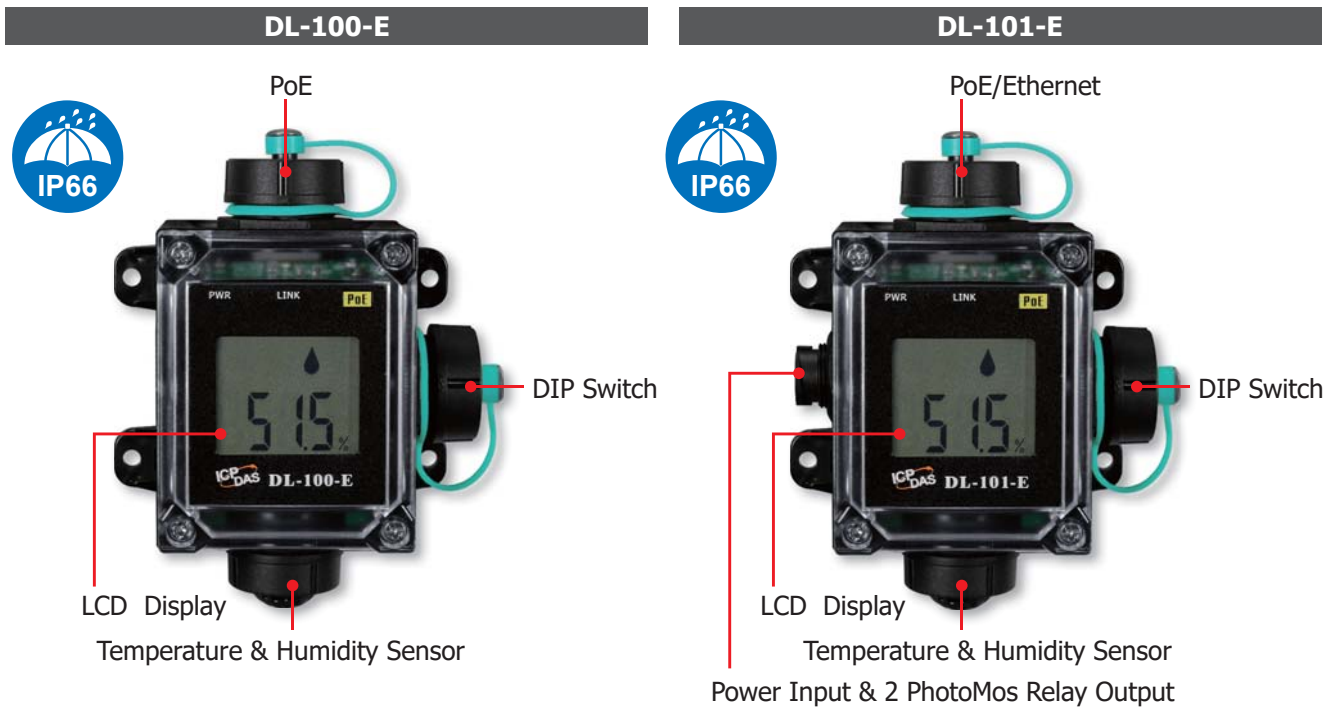
### DIN-Rail



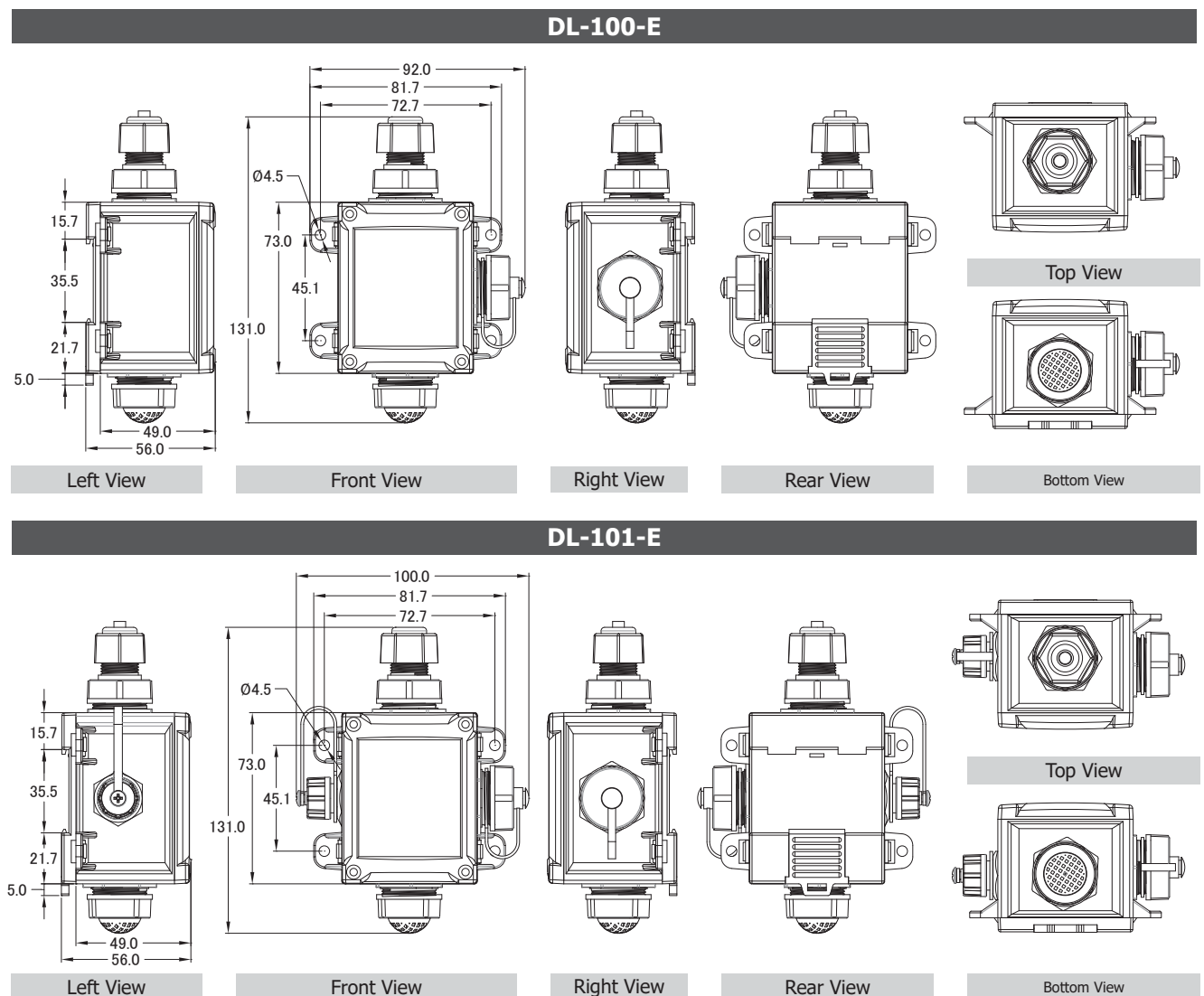
### Wall mounted



**Appearance**







**Dimensions (Units: mm)**



## Ordering Information

|                      |  |
|----------------------|--|
| <b>DL-100-E CR</b>   | Remote Temperature and Humidity Data Logger with LCD Display (Black Cover) (RoHS)        |
| <b>DL-101-E CR</b>   | Remote Temperature/Humidity/Dew Point Data Logger with Safety Alarm (Black Cover) (RoHS) |
| <b>DL-100-E-W CR</b> | DL-100-E-W (White Cover) (RoHS)  |
| <b>DL-101-E-W CR</b> | DL-101-E-W (White Cover) (RoHS)  |

## Accessories

| Model                                 | NS-205-IP67   | NS-205PSE-IP67  | NS-208PSE-IP67   | NS-208-IP67   |
|---------------------------------------|---|---|--|---|
|                                       |  |  |  |  |
| PoE                                   | –   | 802.3af x 4   | 802.3af x 8  | –   |
| Input Voltage Range                   | +10 VDC ~ +30 VDC<br>(1 kV Isolated)  | +46 VDC ~ +53 VDC   |  | +12 VDC ~ +53 VDC   |
| Installation                          | Wall Mounted  | Wall Mounted  | Wall Mounted   |   |
| Dimensions (W x L x H)<br>(Units: mm) | 85 x 76 x 137   | 85 x 76 x 137   | 190 x 155 x 104  |   |

|              |   |
|--------------|---|
| MDR-60-48    | 48 V/1.25 A, 60 W Power Supply with DIN-Rail Mounting |
| DIN-KA52F-48 | 48 V/0.52 A, 25 W Power Supply with DIN-Rail Mounting |
| DR-120-48    | 48 V/2.5 A, 120 W Power Supply with DIN-Rail Mounting |

|  |  |   |
|--|--|---|
| <p>IP67 RJ-45 Plug</p>  <p>4SASO-0001</p> | <p>Cap with Tether</p>  <p>4SASO-0004</p> | <p>IP67 Power Plug</p>  <p>4SIOIK0000013</p> |
|--|--|---|